



Kimbolton School
Cambridgeshire

Pre-School Handbook

**A GUIDE FOR BOTH PARENTS
AND THEIR CHILDREN**



One school. One family.

kimboltonschool.com/preschool



Welcome to Kimbolton Pre-School



Starting school is a big adventure – for your child and for you. At Kimbolton, we want that journey to feel exciting, safe and full of wonder.

Parents are a child's first teachers, and we work hand-in-hand with you to build on everything your little one has already discovered. This guide is here to help, but the most important thing is the relationship we share.

To make things fun for the children, we have a very special friend – our Kimbolton Squirrel. Who is even more special to our Pre-School children who are all in Squirrel Class!

Our Squirrel belongs to all of us: children, families and staff. With bright eyes and endless energy.

Our Squirrel reminds us of our school values:

- Curiosity
- Kindness
- Integrity
- Courage
- Endeavour

Each day, our Squirrel helps children see that learning is an adventure worth celebrating.

Claire Petrie
HEAD OF KIMBOLTON
PREP



Our ethos

At Kimbolton School, we aim to deliver an outstanding, modern all-round education that challenges children to become curious, courageous and kind young adults with a strong moral compass, able to make a difference to the world.

Kimbolton Prep School is a thriving, happy and nurturing environment.

In these formative years, we give children the skills, opportunities and encouragement to succeed.

We focus on independence, creativity, perseverance and joy. Just as our Squirrel explores the woods with curiosity, our children learn through play, exploration and guided discovery.



VISION & VALUES

Information on our whole school vision, ethos and values.

kimboltonschool.com/about-us/values-mission-and-ethos/



Our Pre-School team

A qualified Pre-School teacher, Mrs Jessica Sorensen jms2@kimboltonschool.com, will lead the curriculum and pastoral care of all children in the Pre-School, with support from a Pre-School Teaching Assistant - Mrs Verity Linsley. Our Head of EYFS, Mrs Anna Edwards, will also oversee the curriculum content and ensure a smooth transition into our Reception classes, following a successful journey in our Pre-School and Mrs Abi Turney and Mrs Lizzie Bonnaud will lead on Modern Foreign Languages.

FOREST SCHOOL

Mrs Victoria Thompstone



PE

Mr Stuart Richardson



FRENCH

Mrs Turney



SWIMMING

Miss Stacey Paine &
Mr Jamie Collins



MUSIC

Mrs Helena McKillop



Additional support may come from the Head of Academic Inclusion and the Prep School nursing team. Jessica Sorensen is the Key Person for all pre-schoolers and helps them all to settle, tailors learning to their needs, and builds a strong bond with both child and family. Just like our Squirrel knows every path in the forest, your Key Person will know your child inside and out.

Communication, sessions and wraparound care



Strong partnerships between home and school are vital. We welcome conversations at drop-off and collection, and you can always email staff. For longer discussions, you are encouraged to book a meeting with the Pre-School teacher or the Head of EYFS. Like our Squirrel, we listen carefully so that every child feels understood.

The school day begins at 8.25am where children can be dropped off at the Pre-School door - which closes at 8.50am.

Children can be dropped off at Kim Club from 7:30am, should they wish to join us for breakfast.

Our Squirrel reminds us that every big journey starts with small, steady steps.

Collection from Pre-School is at 3:30pm, however, our Kim Club supervision will be available until 6pm.

- Core day: 8.25am–3.30pm
- Extended care: 7.30am–6.00pm

Our Squirrel shows us that children need both adventure and rest – and we provide time for both.

**WATCH OUR PRE-
SCHOOL FILM**

<https://youtu.be/nkou4-sqjK4?si=g-D8WcW0QpiGTYGz>



The school day

A typical day includes:

- Welcome and registration
- Morning sessions and outdoor play
- Snack and break
- Specialist lessons (Forest School, PE, Modern Foreign Languages, music, swimming)
- Lunch with staff and friends
- Afternoon sessions, story time and more outdoor play
- Dismissal at 3.30pm, with options for after-school activities and Kim Club

Our Squirrel enjoys the rhythm of the day – learning, playing, eating and resting – each part bringing something new.



HISTORY OF KIMBOLTON SCHOOL

Find out more about
our school's history.

kimboltonschool.com/about-us/our-history/



Food & co-curricular life



FOOD AND DRINK

Children enjoy milk and healthy snacks provided by the School. A hot two-course lunch is provided, served in the dining hall with staff encouraging independence and good manners.

All dietary requirements are supported, with a no-nut policy in place.

Our Squirrel reminds us that food is not just fuel – it's about kindness, sharing and community.

CO-CURRICULAR ACTIVITIES

Pre-School children can join co-curricular clubs throughout the year.

Activities encourage confidence, independence and teamwork. Once chosen, children are encouraged to attend for the term. Our Squirrel reminds us that trying new things helps us grow.

OUR LATEST CO-CURRICULAR TIMETABLE



kimboltonschool.com/current-families/co-curricular-programme/

Curriculum



CURRICULUM

As an independent school with exemption from the statutory EYFS Learning and Development requirements, we can offer a broad and creative curriculum.

Learning is shaped around play, exploration and adult-led activities across the Prime Areas (Communication and Language, Physical Development, Personal, Social and Emotional Development) and the Specific Areas (Literacy, Mathematics, Understanding the World, Expressive Arts and Design).

Our Squirrel reminds us that learning happens everywhere: in stories, in numbers, in questions and in play.

LEARNING SUPPORT

If a child needs extra help, we work closely with parents and the Academic Inclusion team to provide support. This may include in-class strategies, group support or external specialists. Our Squirrel reminds us that every child's path is unique, and all progress matters.

TAPESTRY AND ASSESSMENT

We use Tapestry, an online learning journal, to share children's progress with parents. Teachers upload photos, videos and observations, and parents can contribute from home. Assessments are shared through reports and consultation evenings. Our Squirrel reminds us to notice the little steps, because together they make a big difference.

OUTDOORS AND FOREST SCHOOL

Outdoor play is central to our day. Forest School offers children the chance to climb, dig, build and explore nature.

They learn problem-solving, creativity and respect for the environment. Our Squirrel, of course, feels right at home in the forest, showing us that curiosity and courage make learning exciting.

SWIMMING AND SPORT

Pre-School children enjoy a weekly swimming lesson with qualified instructors and PE sessions each week. They build confidence, balance and coordination through active play. Our Squirrel reminds us that movement brings joy and strength.

SCHOOL VALUES

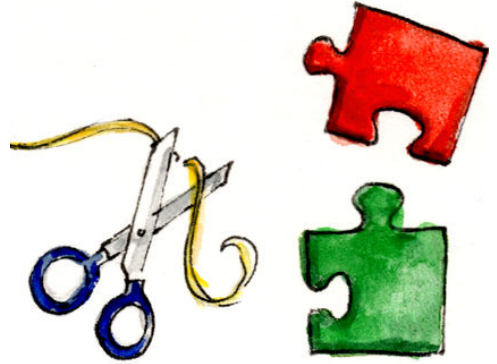
Our School Values of Curiosity, Kindness, Integrity, Courage and Endeavour are embedded in every area of school life. Our Squirrel helps children remember these values in action: sharing toys, telling the truth, trying again, or asking brave questions.

ASSEMBLIES, READING AND ENRICHMENT

Children join in age-appropriate assemblies that celebrate values, stories and achievements. Reading begins when each child is ready, with books chosen to spark interest and build confidence. Trips and workshops enrich classroom learning and open new horizons. Our Squirrel reminds us that every story, song and adventure is part of the journey.



Our culture of care and celebration



REWARDS AND CELEBRATIONS

We celebrate effort, kindness and success with stickers, certificates and a weekly Pre-School trophy.

Birthdays and festive holidays are marked with song and celebration. Our Squirrel reminds us that achievements big and small deserve recognition.



PASTORAL CARE AND SAFEGUARDING

Children's wellbeing is our highest priority. Staff build close, caring relationships with each child, and our safeguarding team ensures every pupil feels safe.

Parents can always share concerns, knowing they will be treated with understanding and confidentiality. Our Squirrel reminds us that kindness and care are at the heart of everything we do.

WELL-BEING AT OUR PREP SCHOOL



kimboltonschool.com/prep/well-being-and-pastoral-in-prep/

Practical information

No guide can capture the joy of Forest School, the pride in a swimming lesson, or the excitement of sharing a story with friends. What we can promise is that your child will be known, supported and celebrated here at Kimbolton.

- Personal belongings: No jewellery or toys needed.
- Medical care: Nurse on site daily, all staff first aid trained. Allergies and health needs carefully supported.
- Attendance: Regular attendance helps children thrive; absences should be for illness, appointments or family needs. A minimum of three days is required, although four days is recommended in the term before children join the Reception classes.
- Contact: School Office on 01480 860505 or via email.
- Contact Pre-School teacher - Jessica Sorensen at: jms2@kimboltonschool.com

With our Squirrel beside us, every day is an adventure, every achievement matters, and every child belongs.



**PREP SCHOOL
WELCOME**



kimboltonschool.com/prep/welcome-to-prep/

Inspiring curiosity, courage and kindness.

Additional resources:

**FOR CURRENT
FAMILIES**

kimboltonschool.com/currentfamilies



Kimbolton Preparatory School

Kimbolton, Huntingdon, Cambs PE28 0EA

T: 01480 860505

E: reception@kimboltonschool.com

W: kimboltonschool.com/preschool



#OneSchoolOneFamily

Kimbolton School is a charitable Company limited by Guarantee and registered in England at Kimbolton, Huntingdon, Cambridgeshire PE28 0EA. Our Company Registration number is 4726427 and our Registered Charity Number is 1098586.