




Kimbolton School  
Cambridgeshire



Kimbolton Sixth Form  
One school. One family



A young woman with long dark hair, wearing a dark blazer over a white collared shirt and a purple skirt, stands smiling in front of a large, multi-story stone school building. She is holding a book with a purple cover. The background is slightly blurred, showing green grass and trees under a clear sky.

A school where the  
future is shaped with  
integrity.



# Welcome to Kimbolton Sixth Form, Cambridgeshire

A unique educational experience nestled in the historic Kimbolton Castle, the only Sixth Form in the country based in a castle and the final residence of Katherine of Aragon.

Here, we blend our rich history with modern educational practices to create a nurturing and dynamic environment for students aged 16-18.

At Kimbolton, we are dedicated to your academic excellence and personal growth.

Our small class sizes ensure you receive personalised attention and are truly known by your teachers, fostering a supportive and collaborative learning atmosphere.

Life at Kimbolton Sixth Form is filled with opportunities and memorable experiences. From the elegant Sixth Form Ball held in our state rooms, to the inspiring annual A Level Art Show, and the vibrant Summer Concert, our calendar is brimming with events that celebrate and showcase student talent. Our productions, social activities, and traditions like Speech Day contribute to a rich and engaging school life.

Our Sixth Form is open to both day and boarding students, creating a diverse and exciting community where lifelong friendships are formed.

**Kimbolton Sixth Form students consistently achieve excellent results, with many progressing to top universities and successful careers in various fields.** Our dedicated careers and futures guidance ensures you are well-prepared for your next steps, whether in higher education or the professional world. However, you will find our Sixth Form is not a pressure-cooker where academic results come at the expense of your happiness. We want you to leave having achieved your goals, with great friends and memories for life.

Mr Will Chuter  
Headmaster



**Selecting the right Sixth Form is a significant decision. While achieving strong A Level grades is crucial, it is also a time to develop your independence and self-confidence as you prepare for the future. I feel the main reason why our Sixth Form is an excellent, all-round choice for you as you take your next steps in your educational journey.**

At Kimbolton Sixth Form, we provide an experience that equips you to face the world with assurance, ready for university, employment, and life beyond. Here, you will benefit from the personalised support of our dedicated subject teachers, who are committed to helping you reach your full potential.

**We are guided by our core values:**

**Kindness:** We believe that kindness is the greatest enabler of all and should be shown to everyone at all times.

**Curiosity:** We want you to keep asking questions about the world around them.

**Courage:** We ask you to be brave and take risks in your learning and lives.

**Endeavour:** We help you understand the value of aspiration and hard work in all you do.

**Integrity:** We value honesty and doing the right thing, even when no-one is looking.

Our Sixth Form is a place where genuine friendships flourish, and daily life is filled with laughter, fun, and discovery. I warmly invite you to learn more about why Kimbolton Sixth Form is the ideal choice for you.

Alice O'Donnell  
Director of Sixth Form

*“Just knowing I can be myself while working hard to getting my best A Level grades is what I really love”*

George  
Sixth Form student



A photograph of three young men in school uniforms (dark suits, white shirts, and dark ties) walking outdoors. They are looking towards each other and appear to be in conversation. The background shows a building with a clock tower and a street lamp. The image is slightly blurred, giving it a candid feel.

A school where everyone  
is free to be courageous  
and curious.

# Why choose Kimbolton?

## Supporting you

Success relies on strong pastoral support. Alongside your tutor, Housemaster/ Housemistress, Head of Sixth Form, Heads of Boarding and Chaplain are available for guidance. We ensure you have the resources needed to navigate this stage, helping you grow in resilience and adaptability.

## Supporting your future

Our Futures Team provides personalised university and career guidance. We offer workshops, one-to-one counselling, practice interviews, Oxbridge prep, and resources to help you make informed decisions. The programme also includes external speaker sessions, industry visits, and work experience opportunities that equip you for life beyond school.



## Be the best version of yourself

Our students achieve excellent A Level results and progress to prestigious universities, including Oxbridge and Russell Group. Whether your aspirations lie in higher education, apprenticeships, or workforce entry provide the holistic support necessary to excel.

## A strong, happy student community

With small class sizes, students receive personalised support and independent work encouragement. Our family atmosphere fosters strong relationships, a sense of belonging, and ensures student happiness and well-being.

## New opportunities

Take on leadership roles in the Combined Cadet Force (CCF), as sports captain or scholar, support younger pupils, or apply to be a Prefect – our Sixth Form has a wealth of opportunities to learn through leadership. Our Sixth Form offering further enhances these opportunities, offering additional pathways to develop skills, passions, and a well-rounded education. Participate in the World Challenge, international expeditions, or through our diverse programme of cocurricular activities, to broaden your horizons.

## Extensive grounds

Our 120-acre countryside campus offers ample space for outdoor activities and sports. Sixth Form students benefit from their own extensive common room and can visit Kimbolton town during lunchtime. The campus also provides a perfect environment for the outdoor and physical challenges.

## Exceptional sports provision

With outstanding facilities and expert coaching, our sports programme fosters teamwork, resilience, and a love of physical activity, culminating in an annual Seniors (Fifth Form upwards) sports day with a competitive tug-of-war.





## Community

- Large student Sixth Form
- Two boarding houses – truly diverse community
- Extensive grounds including swimming pool, theatre, school shop, library and study spaces
- Kimbolton village
- Sixth Form committee
- Personal tutor
- Active House system
- Student wellbeing team – chaplain, health care and counselling service
- Inspiring trips, visits and social events (for example: Art trip to Rome, Geography trip to Iceland, sports tour to South Africa and annual Christian Union trip)
- Large, exclusive common room area
- Membership of the Old Kimboltonians' Association



## Career

- Extended Project Qualification (EPQ)
- Academic support team
- Leadership and mentoring opportunities
- Opportunities in competitive sport/drama/debating/ F1 in schools/music/art/ Community Service Unit/ DofE/Combined Cadet Force and outdoor pursuits
- Over 80 cocurricular clubs and activities (including Medical Society, Law Society, Charities Committee etc)
- Extension courses – from astronomy to film-making – our 'super curriculum'.



## Career

- Every student allocated a career's adviser
- Annual Higher Education, Gap and Career's Fair
- Programme of Citizenship lectures with visiting speakers





A school where  
kindness comes first.

# Pastoral care

Wellbeing is central to our ethos at our Sixth Form. We ensure that you feel safe, supported, and valued.

## House system and tutor

Our House system fosters a 'big brother/sister' network that supports you throughout your Sixth Form journey. This system provides a sense of community and belonging, where you can form lasting friendships and participate in a range of House activities and competitions. Alongside a supportive tutor, there is always someone who will keep an eye on how you are coping with Sixth Form life.

## Chaplaincy

Our Chaplain regularly visits students and provides spiritual guidance and support when and where needed. Additionally, there is a nurse on-site to attend to any medical needs, ensuring your health and safety at all times.



## Academic support

Our academic support team work in partnership with you, members of staff, and your family to provide support in all aspects of your learning – ensuring you are able to reach your full potential.

## PSHE

We offer a comprehensive programme of Personal, Social, Health, and Economic (PSHE) education, helping you to develop the knowledge and skills you need to manage your life, now and in the future.

## Health centre and counselling

Confidential medical care and emotional support is available for you and provided by trained nurses and counsellors at our on-site medical centre. They are able to offer advice on a wide range of health issues and work alongside health professionals at Kimbolton Medical Centre when needed.



# Boarding, trips and social life at Kimbolton

Boarding at Kimbolton is a rich and rewarding experience. Our two characterful boarding houses – Kimbolton House (boys) and White House (girls) – are located on the historic High Street and back onto the school grounds.

Both offer a relaxed family environment and a full programme of activities, providing a true home-from-home at an affordable price.

Choose from a range of different boarding options: full, weekly, flexi and occasional.

**Boys: Kimbolton House**

**Houseparents:**

**Mr Tony and Mrs Emma Lawless**

**[asl@kimbolton.com](mailto:asl@kimbolton.com)**

**Girls: White House**

**Houseparents:**

**Mrs Laura and Mr Philip Hadden**

**[lah@kimbolton.com](mailto:lah@kimbolton.com)**





“Get involved in everything you can – the motto stands that you only get out what you put in.” Former student



## Trips

The Sixth Form Common Room and Club, located in the Castle, is the centre of student social life. Regular events include the annual barbecue, Christmas themed party, quiz night, film nights, music nights and the spectacular end-of-year Summer Ball. The Club helps to bring both year groups together and provides plenty of memorable moments, many of which are recorded in the Upper Sixth Leavers' Yearbook.

As well as these regular term time activities, there are numerous trips to enjoy during the holidays. The Combined Cadet Force offers camps and exercises, and individual courses aplenty to senior cadets. Many students also enjoy training and assessment expeditions for their Gold Duke of Edinburgh award, exploring the North York Moors and Northumberland. Further afield, we have recently run an Art trip to Rome, a Spanish trip to Barcelona and a French trip to Montpellier. The Geography Department Field Trip to Iceland gives a close-up experience of glaciers and geysers. Sports tours, both short and long haul, to locations including Holland, Italy, South Africa and Australia are immensely popular.

## The Sixth Form Committee

We want to know what Sixth Formers think, to encourage suggestions, debate ideas and discuss proposals for change. An elected committee meets regularly with the Head of Sixth Form to discuss any issues with an open agenda. There are also Sixth Form Forums to discuss and air suggestions from both year groups.

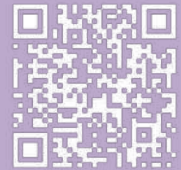




85% of our students  
received their first-choice  
place at University.

# Cocurricular activities

Our students' involvement in Cocurricular activities is a key part of their development into interesting, confident and rounded adults, as well as providing balance in a busy day. Here is a snapshot of what's on offer:



## Academic

- |  |                    |
|--|--------------------|
| Astrophysics Society                             | MedSoc             |
| History Society                                  | Perspectives Group |
| Enlightenment Society (English, PRE and History) | Philosophy Society |
| The Manchester Group                             | Politics Society   |



## Creative

- |                                  |                       |
|----------------------------------|-----------------------|
| Art                              | KiMedia               |
| Drama and Technical Theatre Club | Kimboltonian Magazine |
|                                  | The Music School      |

## General interest

- |                     |                         |
|---------------------|-------------------------|
| Charities Committee | Pupil Forum             |
| Chess Club          | Robot Wars              |
| Christian Union     | Wellbeing Club          |
| Debating Society    | Tycoon Business Trading |







The Combined Cadet Force offers our Sixth Form students exciting leadership opportunities.

# Sport, physical activity and outdoor pursuits

Sports play a crucial role in the development of our students at Kimbolton Sixth Form. Our extensive sports programme includes a variety of activities such as football, cricket, netball, swimming, and athletics. We aim to instill a love for physical activity, promote teamwork, and develop resilience in our students.

Our sports facilities are second to none, with a dedicated sports hall, outdoor pitches, and tennis courts. We also have access to the Senior School's sports facilities, including an astro-turf pitch and swimming Sport and Physical Activity

Sixth Form sport and physical activity (games) takes place on a Wednesday afternoon. The main sports for girls are hockey, netball, tennis and cricket, and for boys are football, hockey, cricket and tennis.

Our team of professional coaches includes former England cricketer Mr Alex Tudor and ex-professional footballer Mr Chris Hope. We also offer an array of other sports and physical activities including: athletics, badminton,

canoeing, circuit training, climbing, girls' football, fitness, ice skating, rowing, sailing, shooting, squash, table tennis, swimming, horse-riding and yoga. These activities are available either during games sessions or within our cocurricular programme.

We encourage keen participants in all sports to excel in competitive matches while also catering for those with a purely recreational interest.

We hold fixtures against other schools and take part in tournaments and sports festivals. Our foreign sports trips such as our South Africa Tour in 2022 and 2024 have proved highly popular. It is our aim to help every student to leave Kimbolton with the motivation, competence and confidence to engage in physical activity for the rest of their lives.



# Outdoor pursuits

Kimbolton School is an RYA (Royal Yachting Association) Recognised Training Centre and is also affiliated to British Canoeing. With highly qualified, dedicated staff, we strive to uphold the highest standards, and are proud to have such an extensive programme and a wealth of equipment to cater for all interests and ability levels.

## Canoeing/Kayaking

Canoeing primarily focuses on the canoe team, however recreational canoeing is available to all as an option during games afternoons in the summer term. Our canoe team competes regularly in marathon races, notably the Devizes to Westminster International Canoe Race (DW) – ‘the canoeist’s Everest’. Starting in Devizes, Wiltshire, and finishing downstream of Westminster Bridge in London, the race is 125 miles long and passes 77 locks around which competitors must carry their boats. Training takes place on local rivers and canals from September to February; this is followed by the Waterside Series of races and finally DW, which takes place over Easter weekend. We have a strong record of success in the race.

## Sailing

We have a large, modern fleet of sailing dinghies based at nearby Grafham Water Sailing Club. These include Picos, Lasers, Fireflies and 2000s, as well as exhilarating Dart 16 catamarans and the ultimate test of ability – the 29er! Students can opt to sail during their games lesson; no experience is necessary as the staff and more experienced sailors will show beginners (quite literally!) the ropes. Team sailors train at weekends and take part in a wide variety of races, from club racing at Grafham Water and matches against other schools, to regional and national competitions organised by the British Schools Dinghy Racing Association and National School Sailing Association. To join the sailing team, students should be able to competently sail around a triangle course

(e.g. RYA Stage 3 / Level 2 ability). Our holiday sailing trips are popular, most recently to Portland, Dorset.



# The Combined Cadet Force (Navy, Army and RAF)

Membership of the CCF in the Sixth Form is open to all those students who have been in the CCF in the Fourth and Fifth Form and also to Lower Sixth Formers new to the school and keen to be a part of a cadet force.

The Lower Sixth year is devoted to attaining the advanced awards relevant to the three sections but the cadet experience is also very much slanted towards developing teamwork skills and leadership qualities. These key skills will count towards promotion and will be employed when training younger cadets in the Contingent. Cadets of all sections will have the opportunity to attend internal or externally run instructor courses, which enable them to become effective teaching NCOs in the Upper Sixth Form.



There are many opportunities for cadets to attend extra training and camps throughout the year, be it a nationally organised activity, competitions, or our own range days, senior exercises, and adventurous training. A 'Field Weekend' is held in October every year with exercises and activities unique to each section that are challenging, exciting and exhausting. All cadets are proud to parade with the Contingent on Remembrance Sunday in support of the local branch of the Royal British Legion, and at our Annual General Inspection in May.

The cadet force at Kimbolton is recognised as one of the strongest in the country offering discipline, challenges, fun, personal advancement and self-development. Some cadets pursue careers in the Armed Forces, but all cadets benefit from the ethos, integrity and high expectations that we hold no matter which path they choose.



## Community Service Unit

The main aim of the Community Service Unit is to develop a sense of social responsibility and give something back to the local community; the contribution from our students is always greatly appreciated.

That said, placements can also provide excellent work experience, particularly for those considering a career in education, medicine, physiotherapy, healthcare, social services, veterinary science or perhaps working with animals. Students develop organisational, leadership, teamwork, problem-solving and communication skills. These are all qualities that universities and employers are looking for.

We are keen to extend the variety of placements we offer and will always try to accommodate requests. Students can, of course, organise their own placements too.

Recent CSU placements include:

- Assisting in local nursery schools and kindergartens
- Assisting in local primary schools
- Working with disabled children
- Working with disabled adults
- Sailing for the disabled
- Helping at local kennels, stables and vets
- Assisting at the local Pharmacy
- Assisting with Games lessons at the Prep School
- Working at a local charity shop
- Visiting the elderly
- Gardening
- Office work

# Extended Project Qualification (EPQ)

In addition to their main subject studies, some Sixth Formers opt to take an Extended Project Qualification (EPQ). This involves a significant piece of independent research outside the main curriculum, spread between January and October of the Lower and Upper Sixth years. This is a demanding but highly regarded qualification where students can develop key skills valued by universities and employers. They are also an opportunity to stretch yourself academically far beyond A Level and to pursue any topic area that you have a passion for.

## What is it?

The EPQ allows students to embark on largely self-directed independent projects, accompanied with some teacher supervision and direction. Students research a topic area, decide on a suitable title, produce their project and then present their work plus conclusions and answer questions in front of an audience. What is produced can vary greatly. Whilst a 5000-word essay on an issue is one method, students can also submit an 'artefact' alongside some analysis and explanation of their research. Examples of projects based on this 'artefact' method have included:

- Exploration of the extent of western influence on Japan during the Meiji and Taisho periods.
- How game theory can influence military strategic thinking.
- Whether stereotypical gender bias reflected in children's literature is comparable with today's social ideology..

The eventual mark is judged just as much on the 'journey' as the outcome – students have to log their research, analysis, reflection and evaluation and their logbook is a rich source of evidence to support their overall grade.

## Why is the EPQ such a good thing?

- An opportunity for students to develop an area of interest.
- It can produce something of a very high standard which goes beyond the constraints of the curriculum.
- There is a great deal of freedom in what candidates can actually produce – it doesn't just have to be a written report/long essay (although it can be).
- Is the equivalent of half an A Level and graded to an A\*.
- Allows students to develop skills of research, independent learning and presentation.
- The Presentation Evening is similar to future experiences at university and beyond.
- It is something tangible for students to demonstrate an interest and research in a proposed university course that they are not studying at A Level.
- The EPQ is viewed positively by universities and employers.

2024 results:

**67%** **80%**  
A\*/ A      A\*/ B



A school where  
ambition and success  
go hand in hand.

# Extension courses

These are an opportunity to add breadth and experiences to your studies and build your academic and personal profile when it comes to university and job applications. Here are some typical courses that we offer.

## Architecture

Enjoy learning about the great structures styles and architects of history. Build a Gothic building model. Ideal for architecture, design, history, art history.

## Astronomy

Stars, planets and cosmology. A chance to open your eyes to the wonders of the universe. No need for science expertise to do this.

## Clay and sculpture

Creative fun with clay, pottery, sculpture designing and making objects and developing an artistic skill. Hands on relaxation and enjoyment.

## Classics

A chance to learn about the culture and history of the Ancient world with a bit of classical language thrown in.

## Cooking for life

Involves a practical and tasty course in culinary skills and healthy eating and cooking. Masterchef for all! (U6th only)

## Debating and Model United Nations (MUN)

Involves presentation, debate and public speaking where you think critically and on your feet. Involvement in Youth Speaks, European Youth Parliament, MUN and other competitions. (L6th only)

## English Language

English lessons for all English for Academic Purposes (EAP) students. Help with preparation for IELTS and getting to grips with English language for A Level. (Compulsory for L6th and U6th EAP students)

## Film appreciation

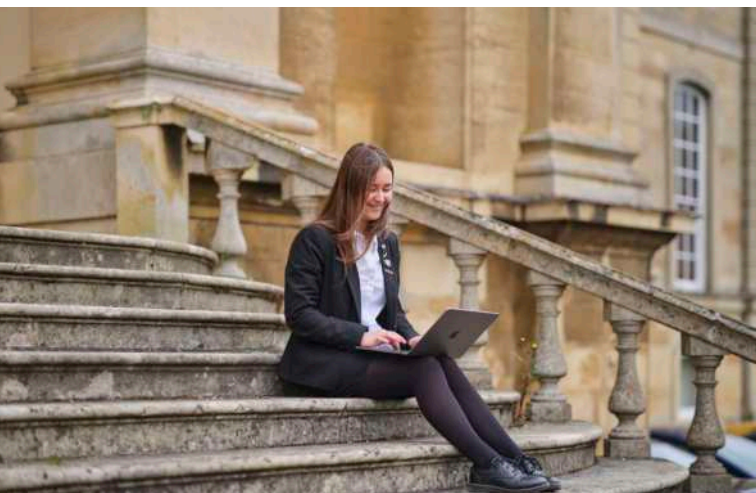
A chance to explore a whole host of different music genres and periods, developing not only a broader experience of music, but a deeper understanding of the historical and political contexts that surround the composition of different pieces.

## Film making

Looks at what goes into making a film, from scripts, storyboard, location scouting, music choices and editing. Students then go on to making their own animations, short films, trailers and music videos. The sessions are very much student led, if there is an idea you'd like to see come to life then we will make it happen.

## Performance extension

Is an opportunity to develop leadership skills and understanding of the Performing Arts industry as well as planning and performing/directing or stagemanaging an abridged script.







In 2024, 60% of our students went to Russell Group universities.

# Results 2024



Kimbolton students excelled across a broad spectrum of subjects, 2024 marks our best year for A\*– A grades at A Level since 2012.



**47%**  
A\*/ A

**73%**  
A\*/ B

**91%**  
A\*/ C

**100%**  
pass rate

**85%**  
first choice place  
for university

# Destinations 2024

## **Birmingham City University**

Real Estate  
Fine Art

## **Bournemouth University**

Ecology and Wildlife Conservation

## **Cardiff University**

International Relations and Politics  
Human Geography and Planning

## **Durham University**

Law

Combined Honours in Social Sciences  
Theoretical Physics

## **Imperial College London**

Mechanical Engineering

## **Keele University**

Chemistry and Mathematics

## **King's College London**

History

## **Kingston University**

Fine Art

## **Leeds Beckett University**

Business & Management

## **Loughborough University**

Human Biology (with placement)

Sport Management (with placement)

## **Newcastle University**

English Language  
English Literature  
Geography  
Classical Studies  
Architecture

## **Northumbria University**

Criminology and Forensic Science  
Theatre and Performance

## **Nottingham Trent University**

Psychology  
Quantity Surveying and Commercial  
Management  
Physics (with foundation)  
Business Management & Marketing  
Business Management and Accounting  
& Finance

## **Oxford Brookes University**

History  
Engineering Foundation  
Biological Sciences  
Real Estate  
Anthropology and Geography  
Royal Academy of Dance  
Ballet Education

## **Royal Holloway**

Geography

## **Sheffield Hallam University**

Occupational Therapy  
Interior Architecture and Design

## **The University of Edinburgh**

History of Art and English Literature

## **UCL (University College London)**

Applied Medical Sciences

## **University of Bath**

Mechanical Engineering (with  
placement)  
Physics with Astrophysics

## **University of Birmingham**

Liberal Arts and Sciences

## **University of Cambridge**

Medicine

## **University of Derby**

Sport Management

## **UEA (University of East Anglia)**

History and Politics (with placement)  
Accounting and Finance (with  
placement)

## **University of Exeter**

Mathematics  
Natural Sciences  
Mathematics with Economics  
Politics  
English

## **University of Hull**

Marine Biology  
University of Leeds  
Linguistics  
Economics  
Politics  
Business Management with Marketing  
Computer Science  
Geography  
History of Art with Cultural Studies

## **University of London Institute in Paris**

International Politics with French

## **University of Manchester**

Medicine  
Law

## **University of Nottingham**

Biochemistry  
Veterinary Medicine  
Mechanical Engineering (with  
placement)  
Politics and International Relations  
Product Design & Manufacture (with  
placement)  
Geography  
Industrial Economics  
Cancer Sciences  
Engineering and Physical Sciences  
(with foundation)

## **University of Oxford**

History

## **University of Plymouth**

Maritime Business  
University of Reading  
Accounting and Finance  
Real Estate Development and Planning

## **University of Sheffield**

Computer Science (with foundation)  
Physics  
Aerospace Engineering

## **University of Southampton**

Mechanical Engineering (with  
placement)  
Computer Science  
History  
Aeron & Astro / Spacecraft Eng IPY

## **University of Warwick**

Mathematics and Physics  
University of Worcester  
Cricket Coaching & Management  
(integrated Masters)

## **University of York**

Sociology with Social Psychology

## **York St John University**

Psychology

# Academic excellence

At Kimbolton Sixth Form, **we prioritise academic excellence through a rich and varied curriculum that caters to each student's needs and abilities.** Our approach encourages independent thinking, creativity, and a lifelong love for learning. Students benefit from small class sizes and personalised attention from our highly-qualified teaching staff.

Our curriculum is designed to be broad and balanced, preparing students for higher education and their future careers. We offer specialist teaching in a range of subjects, ensuring that each student receives the support and guidance they need to succeed.

**The education we provide at Kimbolton Sixth Form is not just about academic achievement; it is about preparing students for whatever the future brings.**

We equip them with critical thinking skills, resilience, and adaptability, ensuring they are ready to face the challenges and seize the opportunities that lie ahead. Through our comprehensive pastoral care and a wide array of cocurricular activities, students develop the confidence and competence to thrive in an ever-changing world.





## An inspiring range of A Level options

At Kimbolton, we offer a robust and dynamic A Level programme designed to provide a bridge between school and university-level study. Our curriculum is tailored to cater to a wide range of academic interests, preparing students for their future careers and higher education.

## Broad and balanced curriculum

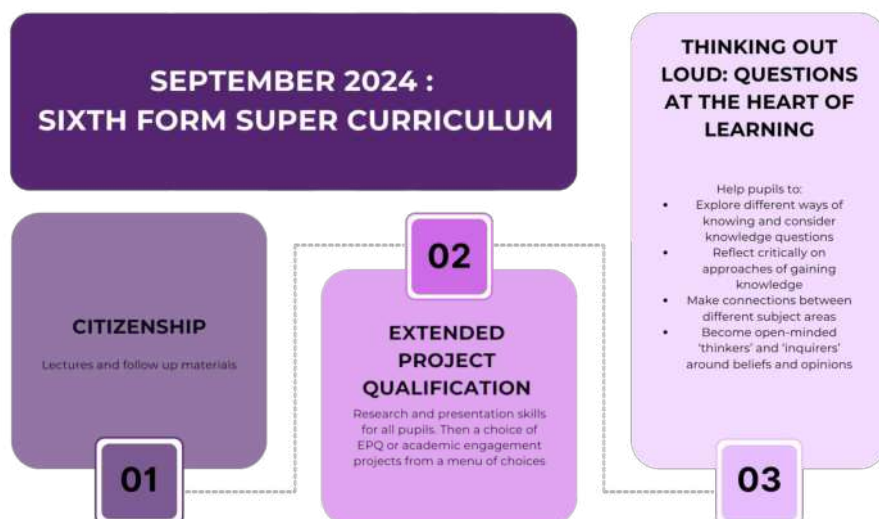
Students at Kimbolton choose three A Level subjects from an extensive list of options, allowing them to focus their academic interests and delve deeper into their chosen fields. Our A Level options include traditional subjects like English Literature, Mathematics, and the Sciences, as well as more specialised courses such as Design Technology, Philosophy, and Politics. Each subject is taught in smaller groups, typically consisting of 8-12 students, ensuring personalised attention and support.

## Academic excellence and support

Our highly qualified teaching staff are dedicated to helping students achieve their full potential. The emphasis on small class sizes means that each student receives tailored guidance and support, encouraging independent thinking, creativity, and a lifelong love for learning. Regular assessments and summer exams in the Lower Sixth help to determine predicted grades for university applications, ensuring students are well-prepared for the next step in their academic journey.

## Super curriculum

An important aspect of the Sixth Form experience at Kimbolton is the super curriculum, which prepares students for life after school by developing key skills such as research, critical thinking, and presentation. This programme includes timetabled lessons and opportunities to undertake an Extended Project Qualification (EPQ), engage in bespoke in-house projects, or participate in massive open online courses (MOOCs).



## Digital learning

Incorporating technology into everyday learning, all A Level courses at Kimbolton are supported by digital resources. With Wi-Fi across campus, iMacs in classrooms, and iPads required for all students, digital learning complements traditional teaching methods. This ensures that students are adept at using modern technologies and can easily adapt to remote learning scenarios if necessary.

# Our A Levels

## 2025-202

Below is the list of A Level subjects, along with a brief overview of each course. For more detailed information, please visit our A Level course page:



## Art & Design - Fine Art

Entry requirements: Preferable to have:  
GCSE Art – Grade 6 or higher. English  
Language/Literature – Grade 5 or  
higher.

Course code: AQA Art and Design: Fine Art (7202)

“Creativity takes courage.” - Henri Matisse. This course introduces students to artistic disciplines such as Ceramics, Printmaking, and Painting. Students develop a sustained portfolio project, culminating in a personal investigation and a 3000-word essay in their final year. The A Level exam includes a 15-hour practical exam.

One of our unique selling points is that we enable artistic/creative students to study all three art-based subjects together.

A Level results

2024

A\*/A 73%

A\*/B 82%



X @KimSchArt

# Art & Design – Critical and Contextual

Entry requirements: Preferable to have: GCSE Art – not essential but do need keen interest in art, galleries and museums. English Language/Literature – Grade 5 or higher.

Course code: OCR Art & Design – Critical & Contextual Studies (H606)

“A picture is a poem without words.” - Horace.

This course focuses on the history of art, symbolism, and composition, exploring artists’ lives and the historical context of their work.

Students also learn gallery curation and desktop publishing.

One of our unique selling points is that we enable artistic/creative students to study all three art-based subjects together.



## A Level results

2024

A\*/A 67%

A\*/B 100%



 @KimSchArt

# Art & Design – Photography

Entry requirements: Preferable to have: GCSE Art – not essential but do need keen interest in photography. English Language/Literature – Grade 5 or higher.

Course code: AQA Art & Design – Photography (7206)

This course covers technical and creative aspects of photography. Students develop skills in various photographic techniques, creating a personal portfolio and engaging in practical projects that include a 15-hour final exam.

## A Level results

2024

A\*/A 50%

A\*/B 50%



 @KimSchArt

# Biology

Entry requirements: Essential to have: Grade 7 or higher GCSE Biology. Grade 7 or higher GCSE Chemistry (or 7,7 Combined Science). Similar grade in GCSE Mathematics.

Course code: AQA Biology (7402)

Explore the living world through topics like genetics, ecology, and human biology. This course combines theoretical knowledge with practical experiments to prepare students for further studies in biological sciences.

## A Level results

2024

A\*/A 39%

A\*/B 61%



# Business

Entry requirements: Preferable to have: Grade 5 in both GCSE English (literature or language) and GCSE Mathematics, as well as a keen interest in current trends and commercial environment.

Course code: AQA Business (7132)

This course provides insights into the world of business, covering topics such as marketing, finance, and management.

## A Level results

2024

A\*/A 9%

A\*/B 55%



Students learn through case studies and real-world applications, preparing them for careers in business and entrepreneurship.



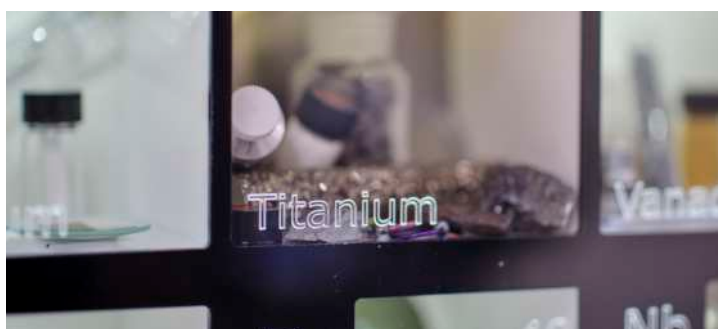


# Chemistry

Entry requirements: Preferable to have: Grade 7 or higher in GCSE Chemistry or Combined Science and a similar grade in GCSE Mathematics. Ability to write concisely and precisely.

Course code: OCR Chemistry A (H432)

Study the fundamental principles of chemistry, including atomic structure, bonding, and chemical reactions. This course emphasises both theoretical understanding and practical laboratory skills.



## A Level results

2024

A\*/A 50%

A\*/B 65%



# Computer Science

Entry requirements: Preferable to have: GCSE Computer Science – Grade 6 or higher. Not essential but considered: For external pupils who did not have the opportunity to complete GCSE Computer Science, entry can be considered on a case-by-case basis.

OCR A-Level Computer Science (H446)

The course continues the exploration into how computers, networks and the technology industry work, continuing from where we left off at GCSE. Topics include the fundamentals of how processors think, how programs are developed, tested and maintained, how data is transmitted across networks and encrypted. As well as Computer Systems, Students further develop their Programming Skills in Python, HTML and Assembly. Robotics projects, Web Design and Graphical User Interface Programming will give a diverse experience of the Power of computers in our modern world.

## New course for 2024!



# Design, Technology: Product Design

Entry requirements: Preferable to have: Grade 6 in DTE-related subject. Desire to be creative and innovative; plenty of self-motivation.

Course code: Pearson Edexcel Design and Technology (Product Design) (9DT0)

Explore the design process, materials, and engineering principles. This course encourages creativity and innovation, with students working on practical projects and developing prototypes.

You'll look at the options and opportunities that are open to designers and engineers, and the difficult choices they face. Using Computer Aided Design (CAS) and Computer Aided Manufacture (CAM) you'll be able to try out ideas quickly and realistically on screen and produce work to a high standard of repeatable accuracy.

Skills such as creativity, freehand drawing and practical techniques are a core feature of the course.

## A Level results

2024

A\*/A 38%

A\*/B 62%

If you are interested in developing practical solutions to everyday problems through creativity, problem solving, planning and evaluation, then this A Level is the perfect choice for you.



# Drama and Theatre

Entry requirements: Preferable to have: Grade 6 in GCSE Drama or GCSE English Literature. Desire to be creative and imaginative; keen to work with others.

Course code: Pearson Edexcel Drama and Theatre (9DR0)

This course combines practical performance skills with the study of dramatic literature and theatre history. Students participate in productions and develop their abilities as actors, directors, and designers.

If you are genuinely interested in theatre as an art form, keen to



## A Level results

2024

A\*/A 10%

A\*/B 60%

explore the working relationships between performers, directors and designers, and have a desire to create and perform, this is the course for you.



# Economics

Entry requirements: Preferable to have: Grade 6 in GCSE Mathematics and be a logical thinker, happy to interpret graphical analysis and interested in current affairs and the commercial and financial environment.

Course code: AQA Economics (7136)

Understand economic principles and their applications to real-world issues. This course covers microeconomics, macroeconomics, and global economics, preparing students for further studies and careers in economics and finance.

If you are interested in how people and businesses make decisions and how government can influence these, then Economics is a great choice for you. Economics studies how people and firms use and abuse the limited resources available and is at the heart of the big choices that society makes.

*“Economics has enabled me to see world events in a new light and to understand their repercussions on daily life” Tom*

# English Language

Entry requirements: Preferable to have: Grade 6 in GCSE English Language and English Literature and a willingness to open your mind to new ideas and interpretations and an eagerness to participate in class debate.

Course code: Pearson Edexcel (9EN0)

Explore the structure, history, and use of the English language. This course examines language in context, linguistics, and communication, preparing students for careers in writing, journalism, and education.

As well as analysing texts, English Language also gives you the opportunity to hone your skills as a writer. You have almost a free choice of genre to explore and we will guide you to create two pieces of your own. The coursework element is a small, yet important part of the course. If you are interested in gaining a greater understanding of a fundamental part of what it means to be human, then this A Level is for you.

## A Level results

### 2024

A\*/A 43%

A\*/B 68%



## A Level results

### 2024

A\*/A 100%

A\*/B 100%



**X @EngatKimbolton**  
**@MrsKerridge**

# English Literature

Entry requirements: Preferable to have: Grade 6 in GCSE English Language and English Literature and a willingness to open your mind to new ideas and interpretations and an eagerness to participate in class debate. Reading independently and widely is the most important requirements.

Course code: OCR English Literature (H472)

Study classic and contemporary literary works, analysing themes, characters, and literary techniques. This course develops critical thinking and analytical skills, preparing students for further studies in literature and the humanities.

We offer a range of exciting literary trips. In the past these have included trips to Dorset (Thomas Hardy country) and Haworth in Yorkshire – once home to the Brontë family. We also arrange many theatre visits and use our lecture theatre to stream showings of National Theatre productions.

## A Level results

2024

A\*/A 58%

A\*/B 92%



 @EngatKimbolton

# French

Entry requirements: Preferable to have: Grade 6 in GCSE French and a keen interest in current affairs, reading and culture.

Course code: Pearson Edexcel (9FR0)

Develop language skills through the study of French grammar, vocabulary, and culture. This course includes speaking, listening, reading, and writing components, preparing students for further language studies and international careers.

By selecting French you will be enthused, challenged and offered a myriad of opportunities to excel. Bilingualism benefits the ageing brain and instils better cognitive skills in intelligence and reading tests.

## A Level results

2024

A\*/A 33%

A\*/B 67%



 @KimboltonFrench

# Geography

Entry requirements: Preferable to have:  
Grade 6 in GCSE Geography.

Course code: OCR Geography (H481)

Geography is a flexible subject and complements many other subjects. Explore physical and human geography, studying topics like climate change, urbanisation, and global development. This course combines fieldwork and theoretical study to develop geographical knowledge and skills.

Over the two-year course you'll look at a wide variety of physical and human environments and the complex interaction of processes that shape our world. These include water and carbon cycles, globalisation and urban environments. Later on, you will explore hazards, cold environments, population and environments, along with an in-depth study of two contrasting places, one local and one overseas.

# History

Entry requirements: Preferable to have:  
Grade 6 or higher in GCSE History and an inquisitive mindset, and passion for all things 'history'.

Course code: AQA History (7042)

Examine historical events, periods, and themes from different perspectives. This course develops research, analysis, and critical thinking skills, preparing students for further studies in history and related fields.



## A Level results

2024

A\*/A 19%

A\*/B 67%



## A Level results

2024

A\*/A 36%

A\*/B 70%

History is an opportunity for you to consider who we all are, and how we came to be as such. If you enjoy asking the big questions, engaging in debate, reading and discovering



things for yourself, then  
History is for you!

# Mathematics

Entry requirements: Preferable to have:  
Grade 8 or higher in GCSE Mathematics.  
Pupils with a Grade 7, alongside excellent  
algebraic skills, could cope with hard work  
and determination.

Course code: Pearson Edexcel Mathematics (9MA0)

Enhance problem-solving and analytical skills  
through the study of algebra, calculus, and statistics.  
This course prepares students for further studies in  
mathematics, science, and engineering.

Many of the Pure topics are familiar to GCSE  
students and A Level extends them considerably.  
New topics are proof, the binomial expansion,  
trigonometric identities, integration, radians and  
logarithms. New Applied topics are correlation and  
regression, probability distributions and hypothesis  
testing on the statistics side, and kinematics and  
Newton's Laws of Motion on the mechanics side.

## A Level results

2024

A\*/A 63%

A\*/B 80%



# Further Mathematics

Entry requirements: Preferable to have:  
Grade 8 or higher in GCSE Mathematics.  
Many students will have also studied a  
Further Mathematics qualification at GCSE  
– such as the AQA Level 2 Certificate in  
Further Mathematics or the OCR Free  
standing Mathematics qualification.

Course code: Pearson Edexcel Mathematics (9MA0)

Designed for students with a strong interest and  
ability in mathematics, this course covers advanced  
topics in pure and applied mathematics. It is ideal  
for those considering degrees in mathematics,  
physics, or engineering.

This course is extremely challenging but can  
be immensely rewarding and satisfying. Unlike  
Mathematics A Level, where the content is entirely  
set, only half of this course is compulsory and you  
can have a say in the other half of what you study.

## A Level results

2024

A\*/A 59%

A\*/B 88%

You need to take Care Pure 1 and 2 and  
then two other modules, typically Further  
Mechanics and Further Statistics 1.



# Music

Entry requirements: Preferable to have: Grade 6 or higher in GCSE Music. Minimum Grade 6 or equivalent, on any musical instrument or voice. Willingness to get involved and take a lead in cocurricular musical activities.

Course code: AQA Music (7272)

A Level Music offers a rewarding insight into how music works and the story of its evolution. The course breaks down into the three components akin to GCSE Music: performance, composition and listening/analysis. Much of the classwork is discussion based and investigative. You will learn how composers go about their craft, understanding their techniques and how their work has been influenced by society. In doing so, you will learn how to write analytically and meaningfully about music as well as develop your own skills as a composer in a response to the studies.

A Level results  
2024  
A\*/B 100%

If you want to develop performance, composition, and music theory skills and study a course that includes solo and ensemble performances, as well as the study of various musical genres and history, then do choose A Level music.



# Physical Education

Entry requirements: Preferable to have: Grade 6 or higher in GCSE Combined Science, or Physics, Chemistry or Biology. An interest in science – particularly human biology.

Course code: AQA Physical Education (7582)

With a committed and passionate PE Department, this is an extremely rewarding and interesting A Level to study at Kimbolton. Two hours per week are allocated to each of the three main theory aspects of the course: anatomy and physiology, psychology and sport and society. Time is also allocated to a written coursework element in the Upper Sixth. Practical performance is a key part of the course and all candidates are required to demonstrate competitive play or coaching.

Study the science of sport and exercise, including anatomy, physiology, and biomechanics. This

A Level results  
2024  
A\*/A 23%  
A\*/B 54%

course combines theoretical knowledge with practical skills, preparing students for careers in sports science and coaching.



# Philosophy, Religion and Ethics (PRE)

Entry requirements: Preferable to have: Grade 6 or higher in GCSE PRE. Ideally a similar grade in English Literature – Grade 6 required if no previous study of PRE).

Course code: OCR Religious Studies (H573)

Explore philosophical and ethical questions, religious beliefs, and moral issues. This course encourages critical thinking and debate, preparing students for further studies in philosophy, theology, and social sciences.



# Physics

Entry requirements: Preferable to have: Grade 7 in GCSE Physics or grade 8,8 in GCSE Combined Science, grade 7 in GCSE Mathematics. It is also strongly recommended that students study mathematics at A Level.

Course code: AQA A Level Physics (7408)

As a physicist you will be excited by innovations in technology and engineering, fascinated with how the world 'works' and how it can be quantified. This course will help you acquire three main skills: the ability to explain, predict and experiment. Successful students develop an independent analytical mind and learn to communicate complex ideas with clarity and simplicity.

Study the fundamental principles of physics, including mechanics, electricity, and quantum theory. This course combines theoretical knowledge

## A Level results

2024

A\*/A 25%

A\*/B 83%

Over the two-year OCR Religious Studies course, you will study a wide range of religious, ethical and philosophical ideas from throughout history, and up to the modern day. There will be big ideas to grapple with, current issues to debate and the ideas of great thinkers from the ancient Greeks right up to the feminist philosophers of today, to evaluate and understand.



## A Level results

2024

A\*/A 63%

A\*/B 69%

with practical experiments, preparing students for further studies in physics and engineering.





# Politics

Entry requirements: Preferable to have: Grade 6 in GCSE English Language or Literature and/or grade 6 or higher in GCSE History or PRE. An appetite for current affairs, including engaging with serious news media.

Course code: Pearson Edexcel Politics (2017)

We'll help you develop a critical awareness of the nature of government and politics and to gain a sense of the rights and responsibilities of the individual within society. You'll quickly develop

a hunger and political awareness which will take you to the context behind political decisions and challenges, and an ability to weight up competing national and international interests and different political systems. You'll gain skills in analysis, problem-solving, critical thinking,



## A Level results

2024

A\*/A 80%

A\*/B 100%

presentational skills and group-working.

Understand political systems, ideologies, and institutions. This course covers topics such as democracy, governance, and

international relations, preparing students for careers in politics, law, and public service.



# Spanish

Entry requirements: Preferable to have: Grade 6 or higher in GCSE Spanish. Ideally a similar grade in GCSE English Language or Literature. A willingness to communicate with others.

Course code: Pearson Edexcel (9SP0)

Knowledge of an alternative language is a concrete and demonstrable life skill. Learning how to interact with speakers of other languages teaches you communication skills, adaptability and cultural awareness. Is it no surprise that languages give you the edge in the job market, and you do not need to be completely fluent in a language to be an asset to potential employers.

With A Level Spanish, develop language skills through the study of Spanish grammar, vocabulary, and culture. This course includes speaking, listening,

## A Level results

2024

A\*/A 50%

A\*/B 75%

reading, and writing components, preparing students for further language studies and international careers.



# How to apply

## Initial enquiry

Visit our website to learn more about what we have to offer, contact our admissions team for a more in-depth discussion and to arrange a visit or taster day. Our taster days provide an excellent opportunity to experience our Sixth Form environment.

## Registration

Complete the online registration form, early registration is recommended but we can accept registrations up until the end of November the year prior to entry.

## Interview

After registering, applicants will be invited to join the Head of Sixth Form for an interview. These are designed to ensure the right fit for both the pupil and the school.

## Offer of a place

Following the interview process, successful applicants will receive a conditional offer.

## Acceptance

To accept your offer, return the acceptance paperwork and deposit by the first working day in March to secure your place at Kimbolton School.

## Results day

On GCSE results day get in touch with us to let us know your results. We will then be able to confirm your place or discuss options with you.





## Key dates for September 2025 entry

### Sixth Form Evening

Thursday 14 November 2024

Head of Admissions: Mrs Rosie White  
admissions@kimboltonschool.com

01480 862209

### Taster Days

Monday 7 October, Tuesday 5 November 2024



### Deadline to register for entry

Saturday 30 November 2024

### Bursary application deadline

Saturday 30 November 2024

### Offers of places

By February half term 2025

### Acceptance deadline

Monday 3 March 2025



# Inspiring curiosity, courage, and kindness.



Kimbolton Sixth Form, Cambridgeshire, PE28 0EA  
admissions@kimboltonschool.com | 01480 862209



[www.carbonbalancedprinter.com](http://www.carbonbalancedprinter.com)  
Healey's Print Group - Reg. 2108

Kimbolton School is a charitable Company limited by Guarantee and registered in England at Kimbolton, Huntingdon, Cambridgeshire PE28 0EA. Our Company Registration number is 4726427 and our Registered Charity number is 1098586.



Kimbolton School  
Cambridgeshire



Sixth Form  
One school. One family



A young woman with long dark hair, wearing a dark blazer over a white collared shirt and a dark skirt, stands smiling in front of a large, multi-story stone school building. She is holding several books, including one with a blue cover and another with a black cover featuring a graphic design. The background is a green lawn and a large tree with dense foliage. A semi-transparent purple rectangular box is overlaid on the bottom half of the image, containing white text.

A school where the  
future is shaped with  
integrity.



# Welcome to Kimbolton Sixth Form, Cambridgeshire

A unique educational experience nestled in the historic Kimbolton Castle, the only Sixth Form in the country based in a castle and the final residence of Katherine of Aragon.

Here, we blend our rich history with modern educational practices to create a nurturing and dynamic environment for students aged 16-18.

At Kimbolton, we are dedicated to your academic excellence and personal growth.

Our small class sizes ensure you receive personalised attention and are truly known by your teachers, fostering a supportive and collaborative learning atmosphere.

Life at Kimbolton Sixth Form is filled with opportunities and memorable experiences. From the elegant Sixth Form Ball held in our state rooms, to the inspiring annual A Level Art Show, and the vibrant Summer Concert, our calendar is brimming with events that celebrate and showcase student talent. Our productions, social activities, and traditions like Speech Day contribute to a rich and engaging school life.

Our Sixth Form is open to both day and boarding students, creating a diverse and exciting community where lifelong friendships are formed.

**Kimbolton Sixth Form students consistently achieve excellent results, with many progressing to top universities and pursuing successful careers in various fields.** Our dedicated careers and futures guidance ensures you are well-prepared for your next steps, whether in higher education or the professional world. However, you will find our Sixth Form is not a pressure-cooker where academic results come at the expense of your happiness. We want you to leave having achieved your goals, with great friends and memories for life.

Mr Will Chuter  
Headmaster



Selecting the right Sixth Form is a significant decision. While achieving strong A Level grades is crucial, it is also a time to develop your independence and self-confidence as you prepare for the future. I feel the main reason why our Sixth Form is an excellent, all-round choice for you as you take your next steps in your educational journey.

At Kimbolton Sixth Form, we provide an experience that equips you to face the world with assurance, ready for university, employment, and life beyond. Here, you will benefit from the personalised support of our dedicated subject teachers, who are committed to helping you reach your full potential.

**We are guided by our core values:**

**Kindness:** We believe that kindness is the greatest enabler of all and should be shown to everyone at all times.

**Curiosity:** We want you to keep asking questions about the world around them.

**Courage:** We ask you to be brave and take risks in your learning and lives.

**Endeavour:** We help you understand the value of aspiration and hard work in all you do.

**Integrity:** We value honesty and doing the right thing, even when no-one is looking.

Our Sixth Form is a place where genuine friendships flourish, and daily life is filled with laughter, fun, and discovery. I warmly invite you to learn more about why Kimbolton Sixth Form is the ideal choice for you.

Alice O'Donnell  
Director of Sixth Form

*“Just knowing I can be myself while working hard to getting my best A Level grades is what I really love”*

George  
Sixth Form student







A school where everyone  
is free to be courageous  
and curious.

# Why choose Kimbolton?

## Supporting you

Success relies on strong pastoral support. Alongside your tutor, Housemaster/ Housemistress, Head of Sixth Form, Heads of Boarding and Chaplain are available for guidance. We ensure you have the resources needed to navigate this stage, helping you grow in resilience and adaptability.

## Supporting your future

Our Futures Team provides personalised university and career guidance. We offer workshops, one-to-one counselling, practice interviews, Oxbridge prep, and resources to help you make informed decisions. The programme also includes external speaker sessions, industry visits, and work experience opportunities that equip you for life beyond school.



## Be the best version of yourself

Our students achieve excellent A Level results and progress to prestigious universities, including Oxbridge and Russell Group. Whether your aspirations lie in higher education, apprenticeships, or entering the workforce, we provide the holistic support necessary to excel.

## A strong, happy student community

With small class sizes, students receive personalised support and independent work encouragement. Our family atmosphere fosters strong relationships, a sense of belonging, and ensures student happiness and well-being.

## New opportunities

Take on leadership roles in the Combined Cadet Force (CCF), as sports captain or scholar, support younger pupils, or apply to be a Prefect – our Sixth Form has a wealth of opportunities to learn through leadership. Our Sixth Form offering further enhances these opportunities, offering additional pathways to develop skills, passions, and a well-rounded education. Participate in the World Challenge, international expeditions, or through our diverse programme of cocurricular activities, to broaden your horizons.

## Extensive grounds

Our 120-acre countryside campus offers ample space for outdoor activities and sports. Sixth Form students benefit from their own extensive common room and can visit Kimbolton town during lunchtime. The campus also provides a perfect environment for the outdoor and physical challenges.

## Exceptional sports provision

With outstanding facilities and expert coaching, our sports programme fosters teamwork, resilience, and a love of physical activity, culminating in an annual Seniors (Fifth Form upwards) sports day with a competitive tug-of-war.





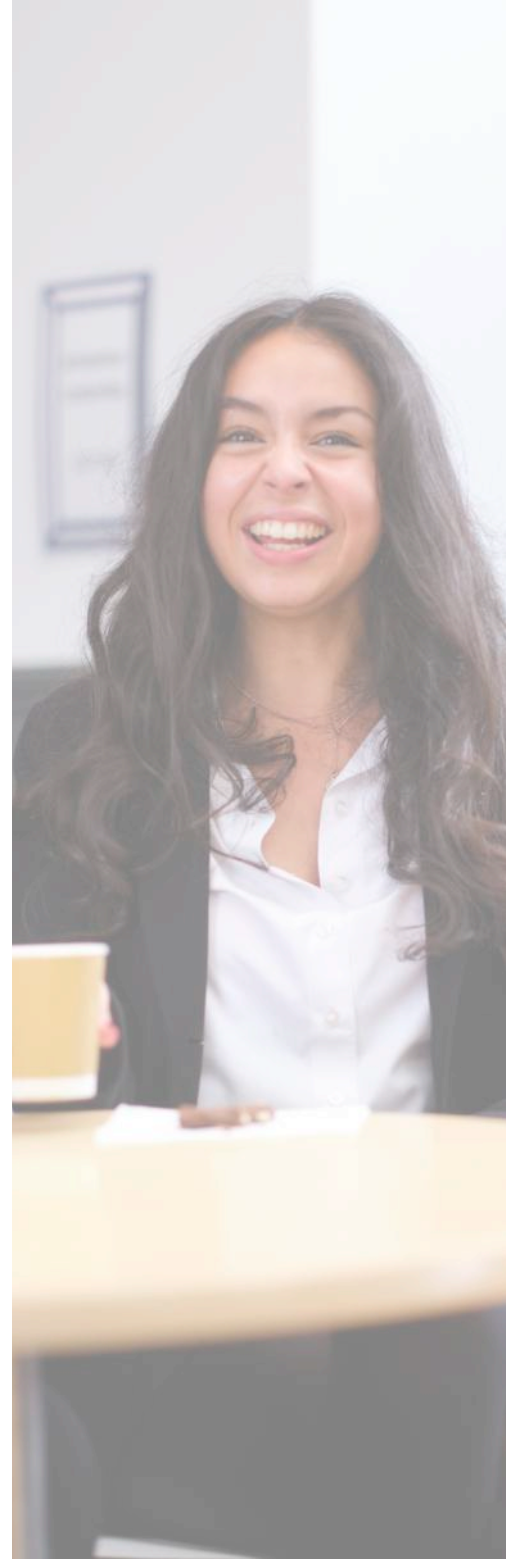
## Community

- Large student Sixth Form
- Two boarding houses – truly diverse community
- Extensive grounds including swimming pool, theatre, school shop, library and study spaces
- Kimbolton village
- Sixth Form committee
- Personal tutor
- Active House system
- Student wellbeing team – chaplain, health care and counselling service
- Inspiring trips, visits and social events (for example: Art trip to Rome, Geography trip to Iceland, sports tour to South Africa and annual Christian Union trip)
- Large, exclusive common room area
- Membership of the Old Kimboltonians' Association



## Challenge

- Extended Project Qualification (EPQ)
- Academic support team
- Leadership and mentoring opportunities
- Opportunities in competitive sport/drama/debating/F1 in schools/music/art/Community Service Unit/DofE/ Combined Cadet Force and outdoor pursuits
- Over 80 cocurricular clubs and activities (including Medical Society, Law Society, Charities Committee etc)
- Extension courses – from astronomy to film-making – our 'super curriculum'.



## Career

- Every student allocated a career's adviser
- Annual Higher Education, Gap and Career's Fair
- Programme of Citizenship lectures with visiting speakers



A school where  
kindness comes first.

# Pastoral care

Wellbeing is central to our ethos at our Sixth Form. We ensure that you feel safe, supported, and valued.

## House system and tutor

Our House system fosters a 'big brother/sister' network that supports you throughout your Sixth Form journey. This system provides a sense of community and belonging, where you can form lasting friendships and participate in a range of House activities and competitions. Alongside a supportive tutor, there is always someone who will keep an eye on how you are coping with Sixth Form life.

## Chaplaincy

Our Chaplain regularly visits students and provides spiritual guidance and support when and where needed. Additionally, there is a nurse on-site to attend to any medical needs, ensuring your health and safety at all times.



## Academic support

Our academic support team work in partnership with you, members of staff, and your family to provide support in all aspects of your learning – ensuring you are able to reach your full potential.

## PSHE

We offer a comprehensive programme of Personal, Social, Health, and Economic (PSHE) education, helping you to develop the knowledge and skills you need to manage your life, now and in the future.

## Health centre and counselling

Confidential medical care and emotional support is available for you and provided by trained nurses and counsellors at our on-site medical centre. They are able to offer advice on a wide range of health issues and work alongside health professionals at Kimbolton Medical Centre when needed.



# Boarding, trips and social life at Kimbolton

Boarding at Kimbolton is a rich and rewarding experience. Our two characterful boarding houses – Kimbolton House (boys) and White House (girls) – are located on the historic High Street and back onto the school grounds.

Both offer a relaxed, family-like environment and a full programme of activities, providing a true home away from home at an affordable price.

Choose from a range of different boarding options: full, weekly, flexi and occasional.

## **Boys: Kimbolton House**

### **Houseparents:**

**Mr Tony and Mrs Emma Lawless**

**[asl@kimbolton.com](mailto:asl@kimbolton.com)**

## **Girls: White House**

### **Houseparents:**

**Mrs Laura and Mr Philip Hadden**

**[lah@kimbolton.com](mailto:lah@kimbolton.com)**







“Get involved in everything you can – the motto stands that you only get out what you put in.”  
Former student



## Trips

The Sixth Form Common Room and Club, located in the Castle, is the centre of student social life. Regular events include the annual barbecue, Christmas themed party, quiz night, film nights, music nights and the spectacular end-of-year Summer Ball. The Club helps to bring both year groups together and provides plenty of memorable moments, many of which are recorded in the Upper Sixth Leavers' Yearbook.

As well as these regular term time activities, there are numerous trips to enjoy during the holidays. The Combined Cadet Force offers camps and exercises, and individual courses aplenty to senior cadets. Many students also enjoy training and assessment expeditions for their Gold Duke of Edinburgh award, exploring the North York Moors and Northumberland. Further afield, we have recently run an Art trip to Rome, a Spanish trip to Barcelona and a French trip to Montpellier. The Geography Department Field Trip to Iceland gives a close-up experience of glaciers and geysers. Sports tours, both short and long haul, to locations including Holland, Italy, South Africa and Australia are immensely popular.

## The Sixth Form Committee

We want to know what Sixth Formers think, to encourage suggestions, debate ideas and discuss proposals for change. An elected committee meets regularly with the Head of Sixth Form to discuss any issues with an open agenda. There are also Sixth Form Forums to discuss and air suggestions from both year groups.





85% of our students  
received their first choice  
place at University.

# Cocurricular activities

Our students' involvement in Cocurricular activities is a key part of their development into interesting, confident and rounded adults, as well as providing balance in a busy day. Here is a snapshot of what's on offer:



## Academic

Astrophysics Society

MedSoc

History Society

Perspectives Group

Enlightenment Society (English, PRE and History)

Philosophy Society

The Manchester Group

Politics Society



## Creative

Art

KiMedia

Drama and Technical Theatre Club

Kimboltonian Magazine

The Music School

## General interest

Charities Committee

Pupil Forum

Chess Club

Robot Wars

Christian Union

Wellbeing Club

Debating Society

Tycoon Business Trading





The Combined Cadet Force offers our Sixth Form students exciting leadership opportunities.

# Sport, physical activity and outdoor pursuits

Sports play a crucial role in the development of our students at Kimbolton Sixth Form. Our extensive sports programme includes a variety of activities such as football, cricket, netball, swimming, and athletics. We aim to instill a love for physical activity, promote teamwork, and develop resilience in our students.

Our sports facilities are second to none, with a dedicated sports hall, outdoor pitches, and tennis courts. We also have access to the Senior School's sports facilities, including an astro-turf pitch and swimming Sport and Physical Activity

Sixth Form sport and physical activity (games) takes place on a Wednesday afternoon. The main sports for girls are hockey, netball, tennis and cricket, and for boys are football, hockey, cricket and tennis.

Our team of professional coaches includes former England cricketer Mr Alex Tudor and ex-professional footballer Mr Chris Hope. We also offer an array of other sports and physical activities including: athletics, badminton,

canoeing, circuit training, climbing, girls' football, fitness, ice skating, rowing, sailing, shooting, squash, table tennis, swimming, horse-riding and yoga. These activities are available either during games sessions or within our cocurricular programme.

We encourage keen participants in all sports to excel in competitive matches while also catering for those with a purely recreational interest.

We hold fixtures against other schools and take part in tournaments and sports festivals. Our foreign sports trips such as our South Africa Tour in 2022 and 2024 have proved highly popular. It is our aim to help every student to leave Kimbolton with the motivation, competence and confidence to engage in physical activity for the rest of their lives.



# Outdoor pursuits

Kimbolton School is an RYA (Royal Yachting Association) Recognised Training Centre and is also affiliated to British Canoeing. With highly qualified, dedicated staff, we strive to uphold the highest standards, and are proud to have such an extensive programme and a wealth of equipment to cater for all interests and ability levels.

## Canoeing/Kayaking

Canoeing primarily focuses on the canoe team, however recreational canoeing is available to all as an option during games afternoons in the summer term. Our canoe team competes regularly in marathon races, notably the Devizes to Westminster International Canoe Race (DW) – ‘the canoeist’s Everest’. Starting in Devizes, Wiltshire, and finishing downstream of Westminster Bridge in London, the race is 125 miles long and passes 77 locks around which competitors must carry their boats. Training takes place on local rivers and canals from September to February; this is followed by the Waterside Series of races and finally DW, which takes place over Easter weekend. We have a strong record of success in the race.

## Sailing

We have a large, modern fleet of sailing dinghies based at nearby Grafham Water Sailing Club. These include Picos, Lasers, Fireflies and 2000s, as well as exhilarating Dart 16 catamarans and the ultimate test of ability – the 29er! Students can opt to sail during their games lesson; no experience is necessary as the staff and more experienced sailors will show beginners (quite literally!) the ropes. Team sailors train at weekends and take part in a wide variety of races, from club racing at Grafham Water and matches against other schools, to regional and national competitions organised by the British Schools Dinghy Racing Association and National School Sailing Association. To join the sailing team, students should be able to competently sail around a triangle course

(e.g. RYA Stage 3 / Level 2 ability). Our holiday sailing trips are popular, most recently to Portland, Dorset.



# The Combined Cadet Force (Navy, Army and RAF)

Membership of the CCF in the Sixth Form is open to all those students who have been in the CCF in the Fourth and Fifth Form and also to Lower Sixth Formers new to the school and keen to be a part of a cadet force.

The Lower Sixth year is devoted to attaining the advanced awards relevant to the three sections but the cadet experience is also very much slanted towards developing teamwork skills and leadership qualities. These key skills will count towards promotion and will be employed when training younger cadets in the Contingent. Cadets of all sections will have the opportunity to attend internal or externally run instructor courses, which enable them to become effective teaching NCOs in the Upper Sixth Form.



There are many opportunities for cadets to attend extra training and camps throughout the year, be it a nationally organised activity, competitions, or our own range days, senior exercises, and adventurous training. A 'Field Weekend' is held in October every year with exercises and activities unique to each section that are challenging, exciting and exhausting. All cadets are proud to parade with the Contingent on Remembrance Sunday in support of the local branch of the Royal British Legion, and at our Annual General Inspection in May.

The cadet force at Kimbolton is recognised as one of the strongest in the country offering discipline, challenges, fun, personal advancement and self-development. Some cadets pursue careers in the Armed Forces, but all cadets benefit from the ethos, integrity and high expectations that we hold no matter which path they choose.





## Community Service Unit

The main aim of the Community Service Unit is to develop a sense of social responsibility and give something back to the local community; the contribution from our students is always greatly appreciated.

That said, placements can also provide excellent work experience, particularly for those considering a career in education, medicine, physiotherapy, healthcare, social services, veterinary science or perhaps working with animals. Students develop organisational, leadership, teamwork, problem-solving and communication skills. These are all qualities that universities and employers are looking for.

We are keen to extend the variety of placements we offer and will always try to accommodate requests. Students can, of course, organise their own placements too.

Recent CSU placements include:

- Assisting in local nursery schools and kindergartens
- Assisting in local primary schools
- Working with disabled children
- Working with disabled adults
- Sailing for the disabled
- Helping at local kennels, stables and vets
- Assisting at the local Pharmacy
- Assisting with Games lessons at the Prep School
- Working at a local charity shop
- Visiting the elderly
- Gardening
- Office work

# Extended Project Qualification (EPQ)

In addition to their main subject studies, some Sixth Formers opt to take an Extended Project Qualification (EPQ). This involves a significant piece of independent research outside the main curriculum, spread between January and October of the Lower and Upper Sixth years. This is a demanding but highly regarded qualification where students can develop key skills valued by universities and employers. They are also an opportunity to stretch yourself academically far beyond A Level and to pursue any topic area that you have a passion for.

## What is it?

The EPQ allows students to embark on largely self-directed independent projects, accompanied with some teacher supervision and direction. Students research a topic area, decide on a suitable title, produce their project and then present their work plus conclusions and answer questions in front of an audience. What is produced can vary greatly. Whilst a 5000-word essay on an issue is one method, students can also submit an 'artefact' alongside some analysis and explanation of their research. Examples of projects based on this 'artefact' method have included:

- Exploration of the extent of western influence on Japan during the Meiji and Taisho periods.
- How game theory can influence military strategic thinking.
- Whether stereotypical gender bias reflected in children's literature is comparable with today's social ideology..

The eventual mark is judged just as much on the 'journey' as the outcome – students have to log their research, analysis, reflection and evaluation and their logbook is a rich source of evidence to support their overall grade.

## Why is the EPQ such a good thing?

- An opportunity for students to develop an area of interest.
- It can produce something of a very high standard which goes beyond the constraints of the curriculum.
- There is a great deal of freedom in what candidates can actually produce – it doesn't just have to be a written report/long essay (although it can be).
- Is the equivalent of half an A Level and graded to an A\*.
- Allows students to develop skills of research, independent learning and presentation.
- The Presentation Evening is similar to future experiences at university and beyond.
- It is something tangible for students to demonstrate an interest and research in a proposed university course that they are not studying at A Level.
- The EPQ is viewed positively by universities and employers.

## 2024 results:

**67%**  
A\* / A

**80%**  
A\* / B



A school where  
ambition and success  
go hand in hand.

# Extension courses

These are an opportunity to add breadth and experiences to your studies and build your academic and personal profile when it comes to university and job applications. Here are some typical courses that we offer.

## Architecture

Enjoy learning about the great structures styles and architects of history. Build a Gothic building model. Ideal for architecture, design, history, art history.

## Astronomy

Stars, planets and cosmology. A chance to open your eyes to the wonders of the universe. No need for science expertise to do this.

## Clay and sculpture

Creative fun with clay, pottery, sculpture designing and making objects and developing an artistic skill. Hands on relaxation and enjoyment.

## Classics

A chance to learn about the culture and history of the Ancient world with a bit of classical language thrown in.

## Cooking for life

Involves a practical and tasty course in culinary skills and healthy eating and cooking. Masterchef for all! (U6th only)

## Debating and Model United Nations (MUN)

Involves presentation, debate and public speaking where you think critically and on your feet. Involvement in Youth Speaks, European Youth Parliament, MUN and other competitions. (L6th only)

## English Language skills

English lessons for all English for Academic Purposes (EAP) students. Help with preparation for IELTS and getting to grips with English language for A Level. (Compulsory for L6th and U6th EAP students)

## Film appreciation

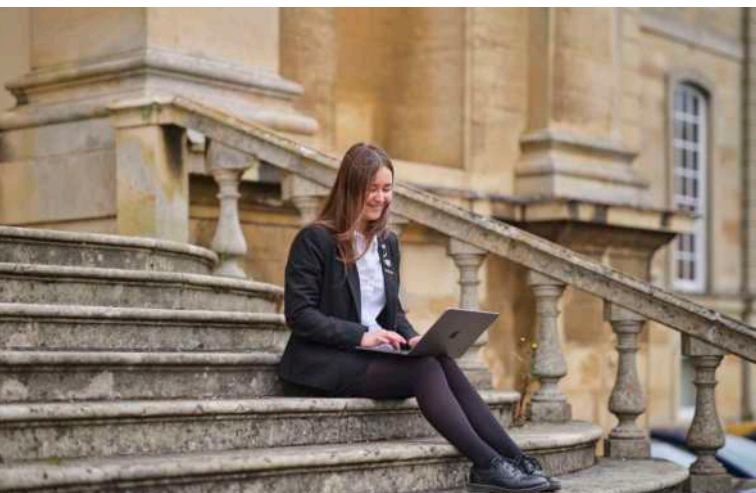
A chance to explore a whole host of different music genres and periods, developing not only a broader experience of music, but a deeper understanding of the historical and political contexts that surround the composition of different pieces.

## Film making

Looks at what goes into making a film, from scripts, storyboard, location scouting, music choices and editing. Students then go on to making their own animations, short films, trailers and music videos. The sessions are very much student led, if there is an idea you'd like to see come to life then we will make it happen.

## Performance extension

Is an opportunity to develop leadership skills and understanding of the Performing Arts industry as well as planning and performing/ directing or stagemanaging an abridged script.





In 2024, 60% of our students went to Russell Group universities.

# Results 2024



Kimbolton students excelled across a broad spectrum of subjects, 2024 marks our best year for A\*- A grades at A Level since 2012.



**47%**

A\*/A

**73%**

A\*/B

**91%**

A\*/C

**100%**

pass rate

**85%**

first choice place for university

# Destinations 2024

## **Birmingham City University**

Real Estate  
Fine Art

## **Bournemouth University**

Ecology and Wildlife Conservation

## **Cardiff University**

International Relations and Politics  
Human Geography and Planning

## **Durham University**

Law

Combined Honours in Social Sciences  
Theoretical Physics

## **Imperial College London**

Mechanical Engineering

## **Keele University**

Chemistry and Mathematics

## **King's College London**

History

## **Kingston University**

Fine Art

## **Leeds Beckett University**

Business & Management

## **Loughborough University**

Human Biology (with placement)

Sport Management (with placement)

## **Newcastle University**

English Language  
English Literature  
Geography  
Classical Studies  
Architecture

## **Northumbria University**

Criminology and Forensic Science  
Theatre and Performance

## **Nottingham Trent University**

Psychology  
Quantity Surveying and Commercial Management  
Physics (with foundation)  
Business Management & Marketing  
Business Management and Accounting & Finance

## **Oxford Brookes University**

History  
Engineering Foundation  
Biological Sciences  
Real Estate  
Anthropology and Geography  
Royal Academy of Dance  
Ballet Education

## **Royal Holloway**

Geography

## **Sheffield Hallam University**

Occupational Therapy  
Interior Architecture and Design

## **The University of Edinburgh**

History of Art and English Literature

## **UCL (University College London)**

Applied Medical Sciences

## **University of Bath**

Mechanical Engineering (with placement)  
Physics with Astrophysics

## **University of Birmingham**

Liberal Arts and Sciences

## **University of Cambridge**

Medicine

## **University of Derby**

Sport Management

## **UEA (University of East Anglia)**

History and Politics (with placement)  
Accounting and Finance (with placement)

## **University of Exeter**

Mathematics  
Natural Sciences  
Mathematics with Economics  
Politics  
English

## **University of Hull**

Marine Biology  
University of Leeds  
Linguistics  
Economics  
Politics  
Business Management with Marketing  
Computer Science  
Geography  
History of Art with Cultural Studies

## **University of London Institute in Paris**

International Politics with French

## **University of Manchester**

Medicine  
Law

## **University of Nottingham**

Biochemistry  
Veterinary Medicine  
Mechanical Engineering (with placement)  
Politics and International Relations  
Product Design & Manufacture (with placement)  
Geography  
Industrial Economics  
Cancer Sciences  
Engineering and Physical Sciences (with foundation)

## **University of Oxford**

History

## **University of Plymouth**

Maritime Business  
University of Reading  
Accounting and Finance  
Real Estate Development and Planning

## **University of Sheffield**

Computer Science (with foundation)  
Physics  
Aerospace Engineering

## **University of Southampton**

Mechanical Engineering (with placement)  
Computer Science  
History  
Aeron & Astro / Spacecraft Eng IPY

## **University of Warwick**

Mathematics and Physics  
University of Worcester  
Cricket Coaching & Management (integrated Masters)

## **University of York**

Sociology with Social Psychology

## **York St John University**

Psychology

# Academic excellence

At Kimbolton Sixth Form, we **prioritise academic excellence through a rich and varied curriculum that caters to each student's needs and abilities.** Our approach encourages independent thinking, creativity, and a lifelong love for learning. Students benefit from small class sizes and personalised attention from our highly-qualified teaching staff.

Our curriculum is designed to be broad and balanced, preparing students for higher education and their future careers. We offer specialist teaching in a range of subjects, ensuring that each student receives the support and guidance they need to succeed.

**The education we provide at Kimbolton Sixth Form is not just about academic achievement; it is about preparing students for whatever the future brings.** We equip them with critical thinking skills, resilience, and adaptability, ensuring they are ready to face the challenges and seize the opportunities that lie ahead. Through our comprehensive pastoral care and a wide array of cocurricular activities, students develop the confidence and competence to thrive in an ever-changing world.







## An inspiring range of A Level options

At Kimbolton, we offer a robust and dynamic A Level programme designed to provide a bridge between school and university-level study. Our curriculum is tailored to cater to a wide range of academic interests, preparing students for their future careers and higher education.

## Broad and balanced curriculum

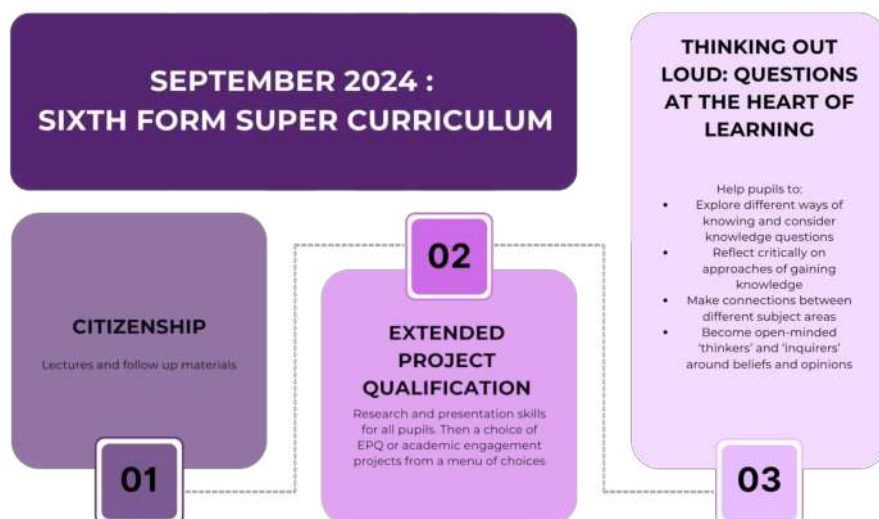
Students at Kimbolton choose three A Level subjects from an extensive list of options, allowing them to focus their academic interests and delve deeper into their chosen fields. Our A Level options include traditional subjects like English Literature, Mathematics, and the Sciences, as well as more specialised courses such as Design Technology, Philosophy, and Politics. Each subject is taught in smaller groups, typically consisting of 8-12 students, ensuring personalised attention and support.

## Academic excellence and support

Our highly qualified teaching staff are dedicated to helping students achieve their full potential. The emphasis on small class sizes means that each student receives tailored guidance and support, encouraging independent thinking, creativity, and a lifelong love for learning. Regular assessments and summer exams in the Lower Sixth help to determine predicted grades for university applications, ensuring students are well-prepared for the next step in their academic journey.

## Super curriculum

An important aspect of the Sixth Form experience at Kimbolton is the super curriculum, which prepares students for life after school by developing key skills such as research, critical thinking, and presentation. This programme includes timetabled lessons and opportunities to undertake an Extended Project Qualification (EPQ), engage in bespoke in-house projects, or participate in massive open online courses (MOOCs).



## Digital learning

Incorporating technology into everyday learning, all A Level courses at Kimbolton are supported by digital resources. With Wi-Fi across campus, iMacs in classrooms, and iPads required for all students, digital learning complements traditional teaching methods. This ensures that students are adept at using modern technologies and can easily adapt to remote learning scenarios if necessary.

# Our A Levels

## 2025-2026

Below is the list of A Level subjects, along with a brief overview of each course. For more detailed information, please visit our A Level course page:



## Art & Design: Fine Art

Entry requirements: Preferable to have: GCSE Art – Grade 6 or higher. English Language/Literature – Grade 5 or higher.

Course code: AQA Art and Design: Fine Art (7202)

“Creativity takes courage.” - Henri Matisse. This course introduces students to artistic disciplines such as Ceramics, Printmaking, and Painting. Students develop a sustained portfolio project, culminating in a personal investigation and a 3000-word essay in their final year. The A Level exam includes a 15-hour practical exam.

One of our unique selling points is that we enable artistic/creative students to study all three art-based subjects together.

A Level results  
2024

A\*/A 73%

A\*/B 82%



X @KimSchArt

# Art & Design: Critical and Contextual

Entry requirements: Preferable to have: GCSE Art – not essential but do need keen interest in art, galleries and museums. English Language/Literature – Grade 5 or higher.

Course code: OCR Art & Design – Critical & Contextual Studies (H606)

"A picture is a poem without words." - Horace.

This course focuses on the history of art, symbolism, and composition, exploring artists' lives and the historical context of their work.

Students also learn gallery curation and desktop publishing.

One of our unique selling points is that we enable artistic/creative students to study all three art-based subjects together.



## A Level results 2024

A\*/A 67%

A\*/B 100%



 @KimSchArt

# Art & Design: Photography

Entry requirements: Preferable to have: GCSE Art – not essential but do need keen interest in photography. English Language/Literature – Grade 5 or higher.

Course code: AQA Art & Design – Photography (7206)

This course covers technical and creative aspects of photography. Students develop skills in various photographic techniques, creating a personal portfolio and engaging in practical projects that include a 15-hour final exam.

## A Level results 2024

A\*/A 50%

A\*/B 50%



 @KimSchArt

# Biology

Entry requirements: Essential to have: Grade 7 or higher GCSE Biology. Grade 7 or higher GCSE Chemistry (or 7,7 Combined Science). Similar grade in GCSE Mathematics.

Course code: AQA Biology (7402)

Explore the living world through topics like genetics, ecology, and human biology. This course combines theoretical knowledge with practical experiments to prepare students for further studies in biological sciences.

## A Level results 2024

A\*/A 39%

A\*/B 61%



# Business

Entry requirements: Preferable to have: Grade 5 in both GCSE English (literature or language) and GCSE Mathematics, as well as a keen interest in current trends and commercial environment.

Course code: AQA Business (7132)

This course provides insights into the world of business, covering topics such as marketing, finance, and management.

## A Level results 2024

A\*/A 9%

A\*/B 55%



Students learn through case studies and real-world applications, preparing them for careers in business and entrepreneurship.

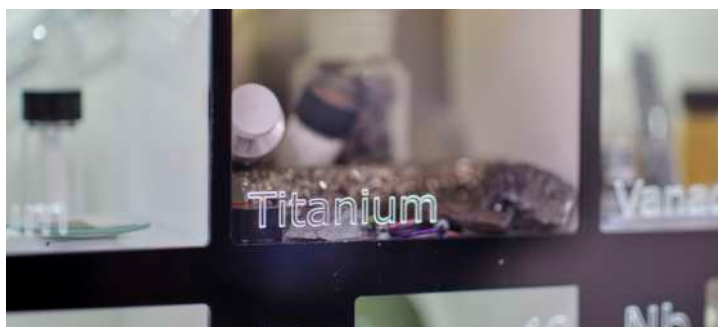


# Chemistry

Entry requirements: Preferable to have: Grade 7 or higher in GCSE Chemistry or Combined Science and a similar grade in GCSE Mathematics. Ability to write concisely and precisely.

Course code: OCR Chemistry A (H432)

Study the fundamental principles of chemistry, including atomic structure, bonding, and chemical reactions. This course emphasises both theoretical understanding and practical laboratory skills.



## A Level results 2024

A\*/A 50%

A\*/B 65%



# Computer Science

Entry requirements: Preferable to have: GCSE Computer Science – Grade 6 or higher. Not essential but considered: For external pupils who did not have the opportunity to complete GCSE Computer Science, entry can be considered on a case-by-case basis.

OCR A-Level Computer Science (H446)

The course continues the exploration into how computers, networks and the technology industry work, continuing from where we left off at GCSE. Topics include the fundamentals of how processors think, how programs are developed, tested and maintained, how data is transmitted across networks and encrypted. As well as Computer Systems, Students further develop their Programming Skills in Python, HTML and Assembly. Robotics projects, Web Design and Graphical User Interface Programming will give a diverse experience of the Power of computers in our modern world.

## New course for 2024!



# Design, Technology: Product Design

Entry requirements: Preferable to have: Grade 6 in DTE-related subject. Desire to be creative and innovative; plenty of self-motivation.

Course code: Pearson Edexcel Design and Technology (Product Design) (9DT0)

Explore the design process, materials, and engineering principles. This course encourages creativity and innovation, with students working on practical projects and developing prototypes.

You'll look at the options and opportunities that are open to designers and engineers, and the difficult choices they face. Using Computer Aided Design (CAS) and Computer Aided Manufacture (CAM) you'll be able to try out ideas quickly and realistically on screen and produce work to a high standard of repeatable accuracy.

Skills such as creativity, freehand drawing and practical techniques are a core feature of the

## Drama and Theatre

Entry requirements: Preferable to have: Grade 6 in GCSE Drama or GCSE English Literature. Desire to be creative and imaginative; keen to work with others.

Course code: Pearson Edexcel Drama and Theatre (9DR0)

This course combines practical performance skills with the study of dramatic literature and theatre history. Students participate in productions and develop their abilities as actors, directors, and designers.



## A Level results 2024

A\*/A 38%

A\*/B 62%

course. If you are interested in developing practical solutions to everyday problems through creativity, problem solving, planning and evaluation, then this A Level is the perfect choice for you.



## A Level results 2024

A\*/A 10%

A\*/B 60%

If you are genuinely interested in theatre as an art form, keen to explore the working relationships between performers, directors and designers, and have a desire to create and perform, this is the course for you.



# Economics

Entry requirements: Preferable to have: Grade 6 in GCSE Mathematics and be a logical thinker, happy to interpret graphical analysis and interested in current affairs and the commercial and financial environment.

Course code: AQA Economics (7136)

Understand economic principles and their applications to real-world issues. This course covers microeconomics, macroeconomics, and global economics, preparing students for further studies and careers in economics and finance.

If you are interested in how people and businesses make decisions and how government can influence these, then Economics is a great choice for you. Economics studies how people and firms use and abuse the limited resources available and is at the heart of the big choices that society makes.

*“Economics has enabled me to see world events in a new light and to understand their repercussions on daily life” Tom*

# English Language

Entry requirements: Preferable to have: Grade 6 in GCSE English Language and English Literature and a willingness to open your mind to new ideas and interpretations and an eagerness to participate in class debate.

Course code: Pearson Edexcel (9EN0)

Explore the structure, history, and use of the English language. This course examines language in context, linguistics, and communication, preparing students for careers in writing, journalism, and education.

As well as analysing texts, English Language also gives you the opportunity to hone your skills as a writer. You have almost a free choice of genre to explore and we will guide you to create two pieces of your own. The coursework element is a small, yet important part of the course. If you are interested in gaining a greater understanding of a fundamental part of what it means to be human, then this A Level is for you.

## A Level results 2024

A\*/A 43%

A\*/B 68%



## A Level results 2024

A\*/A 100%

A\*/B 100%



X @EngatKimbolton  
@MrsKerridge

# English Literature

Entry requirements: Preferable to have: Grade 6 in GCSE English Language and English Literature and a willingness to open your mind to new ideas and interpretations and an eagerness to participate in class debate. Reading independently and widely is the most important requirements.

Course code: OCR English Literature (H472)

Study classic and contemporary literary works, analysing themes, characters, and literary techniques. This course develops critical thinking and analytical skills, preparing students for further studies in literature and the humanities.

We offer a range of exciting literary trips. In the past these have included trips to Dorset (Thomas Hardy country) and Haworth in Yorkshire – once home to the Brontë family. We also arrange many theatre visits and use our lecture theatre to stream showings of National Theatre productions.

A Level results  
2024  
A\*/A 58%  
A\*/B 92%



 @EngatKimbolton

# French

Entry requirements: Preferable to have: Grade 6 in GCSE French and a keen interest in current affairs, reading and culture.

Course code: Pearson Edexcel (9FR0)

Develop language skills through the study of French grammar, vocabulary, and culture. This course includes speaking, listening, reading, and writing components, preparing students for further language studies and international careers.

By selecting French you will be enthused, challenged and offered a myriad of opportunities to excel. Bilingualism benefits the ageing brain and instils better cognitive skills in intelligence and reading tests.

A Level results  
2024  
A\*/A 33%  
A\*/B 67%



 @KimboltonFrench



# Geography

Entry requirements: Preferable to have:  
Grade 6 in GCSE Geography.

Course code: OCR Geography (H481)

Geography is a flexible subject and complements many other subjects. Explore physical and human geography, studying topics like climate change, urbanisation, and global development. This course combines fieldwork and theoretical study to develop geographical knowledge and skills.

Over the two-year course you'll look at a wide variety of physical and human environments and the complex interaction of processes that shape our world. These include water and carbon cycles, globalisation and urban environments. Later on, you will explore hazards, cold environments, population and environments, along with an in-depth study of two contrasting places, one local and one overseas.

# History

Entry requirements: Preferable to have:  
Grade 6 or higher in GCSE History and an inquisitive mindset, and passion for all things 'history'.

Course code: AQA History (7042)

Examine historical events, periods, and themes from different perspectives. This course develops research, analysis, and critical thinking skills, preparing students for further studies in history and related fields.

History is an opportunity for you to consider who we all are, and how we came to be as such. If you enjoy asking the big questions, engaging in debate, reading and discovering things for yourself, then History is for you!

A Level results  
2024  
A\*/A 19%  
A\*/B 67%

If you enjoy fieldwork days looking at rivers, would like to go on our optional residential trip to Iceland, or enjoy the study of coasts, energy sustainability and plate tectonics then this A Level will be a very good choice for you.



A Level results  
2024  
A\*/A 36%  
A\*/B 70%



# Mathematics

Entry requirements: Preferable to have: Grade 8 or higher in GCSE Mathematics. Pupils with a Grade 7, alongside excellent algebraic skills, could cope with hard work and determination.

Course code: Pearson Edexcel Mathematics (9MA0)

Enhance problem-solving and analytical skills through the study of algebra, calculus, and statistics. This course prepares students for further studies in mathematics, science, and engineering.

Many of the Pure topics are familiar to GCSE students and A Level extends them considerably. New topics are proof, the binomial expansion, trigonometric identities, integration, radians and logarithms. New Applied topics are correlation and regression, probability distributions and hypothesis testing on the statistics side, and kinematics and Newton's Laws of Motion on the mechanics side.

## A Level results 2024

A\*/A 63%

A\*/B 80%



# Further Mathematics

Entry requirements: Preferable to have: Grade 8 or higher in GCSE Mathematics. Many students will have also studied a Further Mathematics qualification at GCSE – such as the AQA Level 2 Certificate in Further Mathematics or the OCR Free standing Mathematics qualification.

Course code: Pearson Edexcel Mathematics (9MA0)

Designed for students with a strong interest and ability in mathematics, this course covers advanced topics in pure and applied mathematics. It is ideal for those considering degrees in mathematics, physics, or engineering.

This course is extremely challenging but can be immensely rewarding and satisfying. Unlike Mathematics A Level, where the content is entirely set, only half of this course is compulsory and you can have a say in the other half of what you study.

## A Level results 2024

A\*/A 59%

A\*/B 88%

You need to take Care Pure 1 and 2 and then two other modules, typically Further Mechanics and Further Statistics 1.



# Music

Entry requirements: Preferable to have: Grade 6 or higher in GCSE Music. Minimum Grade 6 or equivalent, on any musical instrument or voice. Willingness to get involved and take a lead in cocurricular musical activities.

Course code: AQA Music (7272)

A Level Music offers a rewarding insight into how music works and the story of its evolution. The course breaks down into the three components akin to GCSE Music: performance, composition and listening/analysis. Much of the classwork is discussion based and investigative. You will learn how composers go about their craft, understanding their techniques and how their work has been influenced by society. In doing so, you will learn how to write analytically and meaningfully about music as well as develop your own skills as a composer in a response to the studies.

A Level results  
2024  
A\*/B 100%

If you want to develop performance, composition, and music theory skills and study a course that includes solo and ensemble performances, as well as the study of various musical genres and history, then do choose A Level music.



# Physical Education

Entry requirements: Preferable to have: Grade 6 or higher in GCSE Combined Science, or Physics, Chemistry or Biology. An interest in science – particularly human biology. Competitive involvement in sport.

Course code: AQA Physical Education (7582)

With a committed and passionate PE Department, this is an extremely rewarding and interesting A Level to study at Kimbolton. Two hours per week are allocated to each of the three main theory aspects of the course: anatomy and physiology, psychology and sport and society. Time is also allocated to a written coursework element in the Upper Sixth. Practical performance is a key part of the course and all candidates are required to demonstrate competitive play or coaching.

Study the science of sport and exercise, including anatomy, physiology, and biomechanics. This

A Level results  
2024  
A\*/A 23%  
A\*/B 54%

course combines theoretical knowledge with practical skills, preparing students for careers in sports science and coaching.



# Philosophy, Religion and Ethics (PRE)

Entry requirements: Preferable to have: Grade 6 or higher in GCSE PRE. Ideally a similar grade in English Literature – Grade 6 required if no previous study of PRE).

Course code: OCR Religious Studies (H573)

Explore philosophical and ethical questions, religious beliefs, and moral issues. This course encourages critical thinking and debate, preparing students for further studies in philosophy, theology, and social sciences.



## Physics

Entry requirements: Preferable to have: Grade 7 in GCSE Physics or grade 8,8 in GCSE Combined Science, grade 7 in GCSE Mathematics. It is also strongly recommended that students study mathematics at A Level.

Course code: AQA A Level Physics (7408)

As a physicist you will be excited by innovations in technology and engineering, fascinated with how the world 'works' and how it can be quantified. This course will help you acquire three main skills: the ability to explain, predict and experiment. Successful students develop an independent analytical mind and learn to communicate complex ideas with clarity and simplicity.

Study the fundamental principles of physics, including mechanics, electricity, and quantum theory. This course combines theoretical knowledge

## A Level results 2024

A\*/A 25%

A\*/B 83%

Over the two-year OCR Religious Studies course, you will study a wide range of religious, ethical and philosophical ideas from throughout history, and up to the modern day. There will be big ideas to grapple with, current issues to debate and the ideas of great thinkers from the ancient Greeks right up to the feminist philosophers of today, to evaluate and understand.



## A Level results 2024

A\*/A 63%

A\*/B 69%

with practical experiments, preparing students for further studies in physics and engineering.



# Politics

Entry requirements: Preferable to have: Grade 6 in GCSE English Language or Literature and/or grade 6 or higher in GCSE History or PRE. An appetite for current affairs, including engaging with serious news media.

Course code: Pearson Edexcel Politics (2017)

We'll help you develop a critical awareness of the nature of government and politics and to gain a sense of the rights and responsibilities of the individual within society. You'll quickly develop

a hunger and political awareness which will take you to the context behind political decisions and challenges, and an ability to weight up competing national and international interests and different political systems. You'll gain skills in analysis, problem-solving, critical thinking,



## A Level results 2024

A\*/A 80%

A\*/B 100%

presentational skills and group-working.

Understand political systems, ideologies, and institutions. This course covers topics such as democracy, governance, and

international relations, preparing students for careers in politics, law, and public service.



# Spanish

Entry requirements: Preferable to have: Grade 6 or higher in GCSE Spanish. Ideally a similar grade in GCSE English Language or Literature. A willingness to communicate with others.

Course code: Pearson Edexcel (9SP0)

Knowledge of an alternative language is a concrete and demonstrable life skill. Learning how to interact with speakers of other languages teaches you communication skills, adaptability and cultural awareness. Is it no surprise that languages give you the edge in the job market, and you do not need to be completely fluent in a language to be an asset to potential employers.

With A Level Spanish, develop language skills through the study of Spanish grammar, vocabulary, and culture. This course includes speaking, listening,

## A Level results 2024

A\*/A 50%

A\*/B 75%

reading, and writing components, preparing students for further language studies and international careers.



# How to apply

## Initial enquiry

Visit our website to learn more about what we have to offer, contact our admissions team for a more in-depth discussion and to arrange a visit or taster day. Our taster days provide an excellent opportunity to experience our Sixth Form environment.

## Registration

Complete the online registration form, early registration is recommended but we can accept registrations up until the end of November the year prior to entry.

## Interview

After registering, applicants will be invited to join the Head of Sixth Form for an interview. These are designed to ensure the right fit for both the pupil and the school.

## Offer of a place

Following the interview process, successful applicants will receive a conditional offer.

## Acceptance

To accept your offer, return the acceptance paperwork and deposit by the first working day in March to secure your place at Kimbolton School.

## Results day

On GCSE results day get in touch with us to let us know your results. We will then be able to confirm your place or discuss options with you.





## Key dates for September 2025 entry

### Taster Days

Monday 7 October, Tuesday 5 November 2024

### Deadline to register for entry

Saturday 30 November 2024

### Bursary application deadline

Saturday 30 November 2024

### Offers of places

By February half term 2025

### Acceptance deadline

Monday 3 March 2025

Head of Admissions: Mrs Rosie White

[admissions@kimboltonschool.com](mailto:admissions@kimboltonschool.com)

01480 862209





# Inspiring curiosity, courage, and kindness.



Kimbolton Sixth Form, Cambridgeshire, PE28 0EA  
admissions@kimboltonschool.com | 01480 862209



[www.carbonbalancedprinter.com](http://www.carbonbalancedprinter.com)  
Healey's Print Group - Reg. 2108

Kimbolton School is a charitable Company limited by Guarantee and registered in England at Kimbolton, Huntingdon, Cambridgeshire PE28 0EA. Our Company Registration number is 4726427 and our Registered Charity Number is 1098586.